

INTER-COUNTY ENERGY

f X @ www.intercountyenergy.net

APRIL 2024

Thank a lineworker

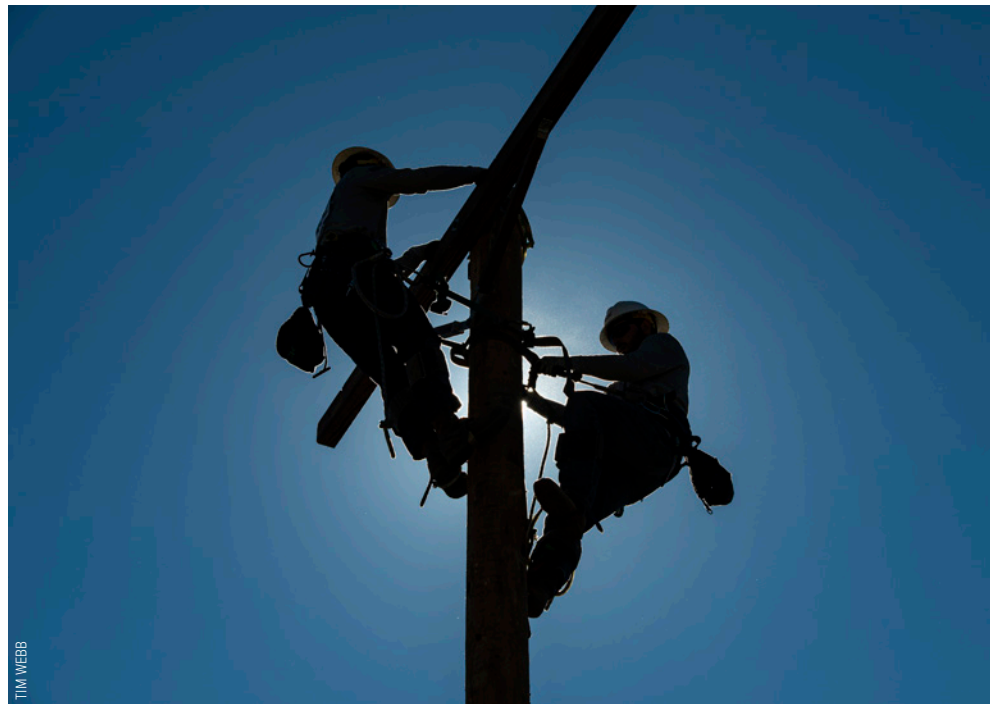
Inter-County Energy celebrates National Lineworker Appreciation Day

All of us at Inter-County Energy are dedicated to improving the quality of life in the communities we serve, and no one works harder toward that goal than our co-op lineworkers.

It's a marvel of this era that electricity is a given. Thanks to co-op leaders of previous generations, we have a system in place to serve you. Our lineworkers play a critical role in making sure Inter-County Energy's infrastructure is built and maintained so that we can consistently provide safe, reliable and affordable electricity for our consumer-members.

America's electric cooperatives have designated the second Monday of each April as National Lineworker Appreciation Day, and on April 8, Inter-County Energy will honor these hardworking individuals who often face challenging conditions to keep the lights on. We are proud to recognize the lineworkers who maintain almost 4,000 miles of power lines in our service territory.

Our lineworkers' efforts and sacrifice are plain to see, but you may not realize the amount of training and study it takes to become a lineworker



TIM WEBB

in the first place. It's about a four-year process to advance from an apprentice to journeyman lineworker. Apprentices work alongside our veterans, learning best practices and what we expect of them.

We stress safety every day at Inter-County Energy. When working with electricity, diligence and professionalism are absolute necessities. That's why the lineworkers who work to restore and maintain your power never stop training. In conjunction with our statewide association, Kentucky

Electric Cooperatives, lineworkers are always learning and are held to professional standards to keep everyone safe.

Whether they're restoring power after a major storm or maintaining infrastructure that's critical to our electric system, lineworkers are Inter-County Energy's first responders, and they're always ready to get the job done, day or night.

In honor of National Lineworker Appreciation Day, take a moment to thank lineworkers for everything they do. Use #ThankaLineworker on social media to show your support.



A Touchstone Energy Cooperative 

Can you dig it? Call 811 first!

Have you ever come home to find painted lines or little colored flags near your property?

Various colored flags identify what lies beneath the ground, and if you see flags it's possible your neighbor has called 811 to have underground utilities identified. If the flags are red, that means electricity lines are buried underneath.

There are all types of lines and pipes buried beneath the surface of the earth, and the flags on the surface indicate service lines for water, electricity and natural gas. So when you start planning to dig anywhere on your property, call 811 a few days before you break ground.

Utility professionals will be dispatched to your home or business to determine the location of underground lines.

When you make the free call to 811 before you dig, you'll help prevent unintended consequences such as injury to you or your family, damage to your property, utility service

outages to the entire neighborhood and potential fines and repair costs.

Picking up the phone and calling 811 before you dig is the easy part. The hard part is getting the shovel out and going to work after your underground line inspection is complete.

Inter-County Energy is concerned for your safety. This spring, call 811 before you dig and be safe. Every day, the board of directors and management of Inter-County Energy strive to provide safe and reliable service at a reasonable rate and to manage your cooperative with our members' best interest in mind.



AVOID DOWNED POWER LINES

If you see a downed power line, move away from it.

Keep a distance of at least 35 feet, as the ground around downed power lines may be energized.

ADDITIONAL TIPS:

- **Don't touch anything touching downed power lines.**
- **Assume ALL downed power lines are live.** They don't have to be arcing, sparking or humming; they can be as quiet as they usually are.
- **If you see someone in direct or indirect contact with a downed line, DO NOT touch him or her.** You could become energized as well. Call 911 for assistance.
- **NEVER attempt to move a downed power line or anything else in contact with it, even with an object such as a broom or a tree branch.** Non-conductive materials like wood or cloth can conduct electricity if even slightly wet.
- **Don't step in water near downed lines.**
- **Never drive over a downed power line.**



Add lawn tools to spring cleaning to-do list

As you open the windows to begin spring cleaning, add another item to your to-do list: Clean your lawn tools.

If you use an electric lawnmower, weed trimmer or hedge trimmer, they will have been cooped up and unused for months. And you'll need to do more than knock off the dust.

Cordless lawnmowers and power tools need regular cleaning and maintenance to operate properly. Good news: They're easier to take care of than gas-powered tools.

Follow the manufacturer's instructions for cleaning your specific models. Here are some general tips:

- Remove the tool's battery before you get started, and slip on a sturdy pair of gloves to protect your hands.
- Use a dry cloth to wipe down the device and remove cobwebs, dust, loose dirt and dead bugs.
- With a plastic scraper or a bristle brush, scrub off dried mud and grass all over the device, even underneath.



- Damp-clean the machine all over with a wet cloth, but steer clear of the motor. Take extra care around the blade.
- Look for cracks on the casing and determine if the tool is still usable.

- Check that the handle is tight and sturdy. Inspect the blade for rust.
- Fully charge the tool, replacing the battery if it has gotten damaged over the winter.

SmartHub
Pay Now Option



RANDY BUCKNAM

Earth
Day is
Monday,
April 22



SUNNY STUDIO/DOBE STOCK



How we define sustainability

OUR MISSION

Inter-County Energy accomplishes our daily mission by providing energy and services to our members through a culture of Safety, Accountability, Integrity, Innovation and Commitment to Community.

PRESIDENT/CEO

Jerry Carter

BOARD OF DIRECTORS

Chairman

Joseph H. Spalding (Marion)

Vice Chairman

Jason E. Todd (Lincoln)

Secretary-Treasurer

J. Kevin Preston (Garrard)

Directors

William H. Peyton (Casey)

W. Allen Goggin (Boyle)

Louis A. Kerrick (Mercer)

Attorney

James Hadden Dean

EDITOR

Morgan Janssen

24-HOUR EMERGENCY/OUTAGE REPORTING (866) 224-2235

For major outage updates and restoration efforts, listen to the following radio stations; WPBK 102.9, WHIR 105.1, WOKH 102.7, WDFB 88.1 or WLSK 100.9.

OFFICES:

DANVILLE/BOYLE COUNTY

OFFICE HOURS: 7:30 A.M. - 4:30 P.M.

(859) 236-4561

LEBANON/DISTRICT OFFICE

OFFICE HOURS: 7:30 A.M. - 4 P.M.

(270) 692-3761

www.intercountyenergy.net

Email: mail@intercountyenergy.net

This institution is an equal opportunity provider and employer.

Follow us on social media:



With Earth Day occurring this month, you'll probably read and hear a lot about sustainability. It seems everybody has their own version of what this fashionable corporate buzzword means, with many definitions centering on environmental stewardship.

Though Inter-County Energy has long been a leader in protecting the environment, we believe sustainability encompasses far more than any one thing. Rather, it's the standard by which we operate. With every decision and action, your co-op strives to do the right thing—the sustainable thing—for our members.

Commitment to the communities we serve is at the heart of our interpretation of sustainability. Our co-op was founded to provide reliable and affordable power to rural Boyle, Casey, Garrard, Lincoln, Marion, Mercer and areas of Madison, Rockcastle, Nelson, Larue, Taylor and Washington counties. Through a culture of innovation and adaptability we've been successful in keeping the power on for almost 86 years.

We're always working to improve the quality of life in our communities in visible ways, such as supporting charitable causes, being involved

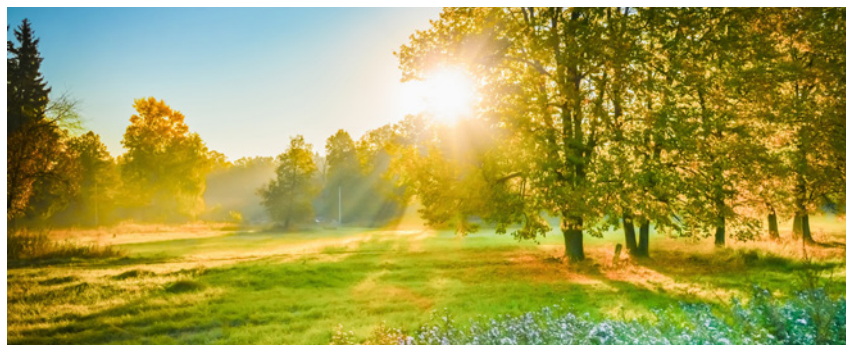
in local events and working with partners to create jobs.

We're also dedicated to sustaining our communities in ways that aren't so apparent. Our long-term commitment to striking a livable balance between the environment and those who use its resources is a key example.

Your cooperative leadership remains responsive to our members' needs and concerns while making choices that balance affordability and reliability with environmental sustainability. Our measured, yet progressive use of renewable power generation is just one example of how we're accomplishing this.

We also care about the needs of future generations. By providing electricity in an environmentally responsible manner today, we're protecting the world they will inherit. Sometimes that's an easy call, and sometimes it's difficult. But it is always the right thing to do.

There are many ways to support sustainability. Inter-County Energy is doing its part by providing our members with electricity that is safely produced, reliable, economic and, most importantly, sustainable. It's how we best serve our members today and in the future.



DBRU/SAD/BE STOCK