

INTER-COUNTY ENERGY

   www.intercountyenergy.net

FEBRUARY 2022

Safety Matters

Keep your family safe when using a space heater

Always take precautions to prevent house fires and other issues that might endanger your loved ones if you use a space heater to warm your home.

Aim for a space heater that provides 10 watts per square foot of the room. So if the room is 150 square feet, look for a space heater that produces up to 1,500 watts.

Avoid using extension cords and power strips not rated for high amperage. Space heaters require a lot of energy and can be dangerous if used with extension cords. If possible, plug your space heater directly into the wall.

Never use a heater you suspect may be damaged. Inspect your heater before you use it to ensure the cord is not frayed or cracked. Never run a space heater cord beneath a carpet or rug. This can damage the cord and create a fire hazard.

During use, frequently check to determine if the heater plug or cord, wall outlet, or faceplate is hot. If so, discontinue use immediately and contact an electrician.

An electric space heater is a temporary option when looking for supplemental heat. Whenever leaving a room



or going to sleep, it is important to turn off the electric space heater. If you leave it unattended, it could overheat or fall. As well, a child could play too close to it and get hurt.

When using a space heater, establish a 3-foot, kid-free zone. Be sure to keep the heater at least 3 feet away from things that could burn, like furniture, bedding and curtains. Install smoke

alarms on every floor of your home and outside all sleeping areas, and test them once a month.

Ensure the heater is on a level, stable surface where it cannot be knocked over. To prevent the risk of electric shock. Never touch a heater with wet hands.

Inter-County Energy wants to keep you safe!


INTER COUNTY
ENERGY COOPERATIVE

A Touchstone Energy Cooperative 

Get Healthy Savings benefits with Co-op Connections

As we begin a new year, don't forget that Inter-County Energy's Co-op Connections program offers savings on lab and imaging services, chiropractic, dental, vision and hearing care.

Many insurance plans do not include provisions for these five health benefit areas, but you can save 10% to 60% on eyeglasses, contact lenses and eye exams. You can receive 20% to 40% discounts on a range of dental care services or get 30% off chiropractic treatments. There are also 35% discounts on hearing aid prices.

We call this new package Healthy Savings. At the Healthy Savings website, you can locate local providers that participate in the program and find detailed information about how to take the maximum advantage of the discounts.

If you don't have access to the internet, please call (859) 236-4561 and someone here will assist you. Or call (800) 800-7616.

At Inter-County Energy, we're committed to helping you save money during these challenging economic times. The Healthy Savings package will stretch your paychecks. We're always looking out for our members.



Billie Smith saved \$1,758 on the cost of braces for her children, Liddie and Davis, through the Co-op Connections program available from Inter-County Energy. Photo: Tim Webb

Happy retirement

On December 30, Pat Forster, Service Records Supervisor, retired after 13 years of service. Pat was hired at Inter-County Energy as a service records clerk in 2008 and became service records supervisor in 2012, where she worked until her retirement.

Ron Quinn, Plant Accountant, was hired on December 10, 2003. Ron retired January 14 with 19 years of service here at Inter-County Energy.

We would like to thank Pat and Ron for their many years of dedication and hard work to our co-op and wish you both a happy retirement.



Pat Forster



Ron Quinn

Inter-County Energy will be closed Monday, February 21, in honor of Presidents Day. Please contact our 24-hour outage line in case of an emergency/outage at (866) 224-2235.

Announcing the Inter-County Energy Scholarship Program

Inter-County Energy is offering six, one thousand dollar (\$1,000) scholarships, in a program designed to enhance the education and future careers of deserving students. All interested students are invited and encouraged to apply. The deadline for entering the scholarship program is **April 12th, 2022**.

PARTICIPATION REQUIREMENTS

- 1) Applicant must be an actively enrolled senior in good standing from one of the following Inter-County Energy service counties: Boyle, Casey, Garrard, Larue, Lincoln, Rockcastle, Madison, Marion, Mercer, Nelson, Taylor, or Washington.
- 2) Applicant must be planning to enroll in an accredited post-secondary educational or training institution of his/her choice.
- 3) Applicant's parents or legal guardian must be a resident of Inter-County Energy's service area

- and a current member of the cooperative. The primary residence of the legal parent or guardian must be on the cooperative lines.
- 4) In order to receive scholarship money provided by Inter-County Energy, the recipient must provide vouchers or bills for money due from the institution of higher education of his/her choice no later than August 31, 2022. Scholarships will be paid directly to the institution of choice and can be used for books, tuition, housing, and lab fees, or any other supplies directly related to the student's education.
 - 5) Scholarships are not renewable.
 - 6) Applicants are required to submit an entry form.
 - 7) Applicants must submit a head shot photo with entry.
 - 8) Inter-County Energy employees/directors and their immediate families are not eligible for this scholarship.

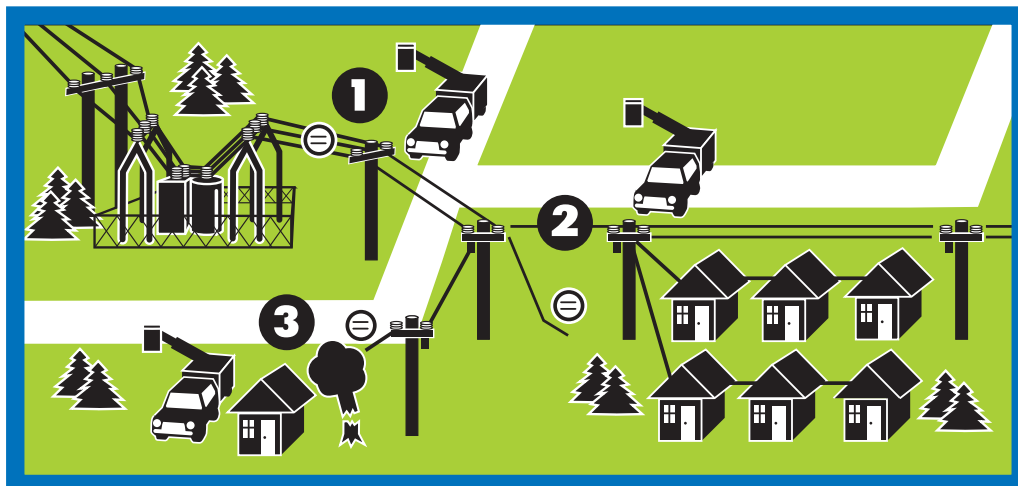


Interested students can obtain an application by contacting the Member Services Department at 859-936-7822 or download an application at <https://www.intercountyenergy.net/scholarships>

DISCLAIMER: Inter-County Energy scholarships are awarded without regard to race, creed, religion, gender, disability, or national origin. Winners will be selected by a random drawing.

Getting you back on line

The first priority in any outage is to get the greatest number of people back on as quickly as possible. So, electric cops follow a sequence of repairs to restore power to large groups of consumers before tackling smaller groups and individual consumers. This fictitious example details a typical repair sequence.



1 The main distribution line from substation must be fixed before anyone can have power.

2 Next, repair crews fix the lines that bring power to the greatest number of people in a community.

3 After larger pockets of consumers are back on line, crews fix service lines to individual homes.



OUR MISSION

The mission of Inter-County Energy Cooperative is to provide long-term valued electrical energy and services to our members through a culture of safety, accountability, innovation, integrity, and commitment to community.

PRESIDENT/CEO

Jerry Carter

BOARD OF DIRECTORS

Chairman

Joseph H. Spalding (Marion)

Vice Chairman

Jason E. Todd (Lincoln)

Secretary-Treasurer

J. Kevin Preston (Garrard)

Directors

William H. Peyton (Casey)

W. Allen Goggin (Boyle)

Louis A. Kerrick (Mercer)

Attorney

James Hadden Dean

EDITOR

Morgan Janssen

24-HOUR EMERGENCY/OUTAGE REPORTING (866) 224-2235

For major outage updates and restoration efforts, listen to the following radio stations; WPBK 102.9, WHIR 105.1, WOKH 102.7, WDFB 88.1 or WLSK 100.9.

FOR INFORMATION AND INQUIRIES:

Toll-free: 1-888-266-7322

OFFICE HOURS: 7:30 AM - 4:30 PM

DANVILLE/BOYLE COUNTY
(859) 236-4561

LEBANON/DISTRICT OFFICE
(270) 692-3761

www.intercountyenergy.net

E-mail: mail@intercountyenergy.net

This institution is an equal opportunity provider and employer.

Follow us on social media:



It's not over yet

Be prepared for winter storms

Few of us can forget the brutal storm that passed through here a year ago, damaging our electrical grid and interrupting the flow of power to some members for several days. That memory reminds us that—even though winter will be winding down—it's not over yet. For safety's sake, please join your co-op in remaining vigilant and prepared for the consequences of severe weather.

Rest assured that Inter-County Energy employees are ready to respond as quickly and safely as possible to repair the power grid if we're hit by heavy snow and ice accumulation.

Inter-County Energy members can report power outages 24 hours a day, seven days a week by calling (866) 224-2235, or by using our mobile app. You can check power restoration progress by visiting the co-op's Facebook account. We'll also send outage

restoration updates to local media.

If you care for someone who is medically dependent on electricity, be sure to follow the FDA's guidelines in preparing and handling power outages for electrical medical devices. You can locate it online at www.fda.gov/media/80782/download.

Last, don't forget that when an outage occurs, it usually means power lines are down. Always assume any downed lines you see are live and therefore dangerous. Stay as far away from them as possible and report the situation to Inter-County Energy dispatchers by calling (866) 224-2235 or a local law enforcement agency immediately.

None of us can control the weather, but we can all be prepared to handle a storm-related outage as quickly and safely as possible. Inter-County Energy is ready, and I hope you will be, too.



JACKSON PURCHASE ENERGY