

INTER-COUNTY ENERGY



www.intercountyenergy.net

JANUARY 2023



Happy New Year from Inter-County Energy!

Alarms could save your life

Does your home have a fireplace or any gas appliances? You should install carbon monoxide alarms in or near every bedroom.

The carbon monoxide alarm will react when it senses that carbon monoxide levels in your house are too high, usually because an appliance is malfunctioning. Carbon monoxide alarms do not detect gas leaks.

Here are eight tips for ensuring your carbon monoxide alarm works when you need it:

1. Replace your alarms every five years. Most warranties cover only five years.
2. Replace your batteries at least once a year or when the device starts making a “chirping” sound. That’s usually a symptom of a low battery.
3. Test the alarm regularly by pressing the “test” button and holding it down

4. Locate carbon monoxide alarms at least 10 feet away from sources of humidity like showers and bathrooms, where steam can cause them to overreact.
5. Place a carbon monoxide alarm on every level of the house and at the top of the basement stairs, even if there are no bedrooms on those floors.
6. Do not put a carbon monoxide alarm in the garage, kitchen or the room with your gas furnace.
7. If your alarm goes off too often, it probably means it’s too close to a fireplace or a gas furnace or stove. It also could mean that your gas appliances are not burning the fuel completely. If you see a yellow or orange pilot light,



- that could be the case. Call a plumber to check it out.
8. Leave the alarm plugged in all year, not just during the heating season. Your gas stove, clothes dryer and water heater also are potential sources of carbon monoxide leaks. And a running car in the garage can cause a carbon monoxide problem inside the home.



A Touchstone Energy Cooperative

Practice safe winter driving

When ice, sleet and snow make road conditions hazardous, Inter-County Energy urges our owner-members to avoid travel unless necessary. If you must be on the roads, heed these safe winter driving tips from your co-op and the Kentucky State Police.

PREPARE

- Check goky.ky.gov for up-to-date traffic and roadway conditions.
- Inspect your vehicle's tire tread, tire air pressure, windshield washer fluid and antifreeze. Ensure the exhaust system and defrosters are working properly.
- Have a full tank of gas.
- Take a charged cell phone, ice scraper, small shovel, sand or cat litter, blanket, water and snacks.
- Remove snow, ice or frost from the entire vehicle for unobstructed vision.
- Notify someone of your travel plans prior to departure.

PREVENT

- Wear your seatbelt.
- Turn on headlights.
- Leave early and allow more travel time. Expect delays.
- Drive slowly and increase the distance between vehicles. Stopping in snow



- may require up to four times greater distance.
- Use extra caution on bridges, overpasses and exit/entrance ramps, which can be icy when other areas are not.
- Maintain control in a skid by easing off the gas while steering in the direction you want the front of the vehicle to go.
- Give a wide berth to plows, salt trucks and other snow-clearing equipment.
- Move over if you see an Inter-County Energy vehicle—or any other vehicle

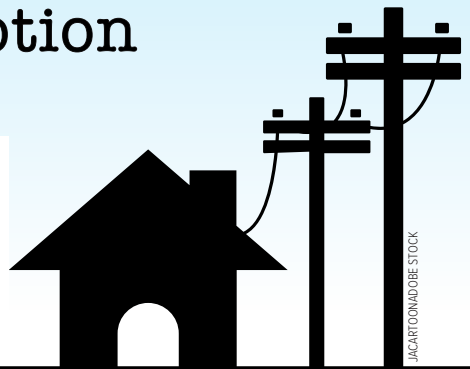
with flashing yellow lights—on the roadside. It's the law.

- If traffic lights are out, treat intersections as four-way stops.

First responders experience a high volume of calls during extreme winter weather events. If you have a minor, non-injury accident, attempt to move your vehicle out of the roadway. In non-emergent situations, stranded or wrecked vehicle recovery will be delayed until conditions improve.

Claim the sales tax exemption on utilities at your primary residence

To find out how to claim your primary residence state sales tax exemption from the Kentucky Department of Revenue, see page 15. Scan the QR Code for more information from Inter-County Energy's website.



Inter-County Offices will be closed Monday, January 16, in observance of Martin Luther King Jr. Day.

Christmas Blessings

A special thank you to the following businesses and individuals

- | | | | |
|---|-----------------------------------|-----------------------------|--------------------------------------|
| A&L Accessories | Dan Hitchcock | Lagwen's | Rae of Sunshine Foundation |
| Aaron Moore Tree Service | Danielle's Drive-Away Cafe | Laicee's Cakes and More | Ragetti's Italian Food |
| AGE Engineering Services | Danville Bowlarama | Lawson's Tractor | Regina Guinn |
| Ale-8-One | Danville Office Equipment | Lebanon Chiropractic | Republic State Mortgage |
| Angela Todd | DecoArt | Lebanon Family Dental | Rosewood Bar and Grill |
| Applebee's | East Kentucky Power Cooperative | Lebanon Health and Fitness | Rosewood Golf Course |
| April Burgess | Elizabeth Partin | Lebanon Jewelry & Gifts | Sam Bach |
| Asplundh | Emily Zink, Tastefully Simple Rep | Limestone Branch Distillery | Sears |
| Auto Kustoms | Exquisite Jewelry | Lindsey Yeager | Shaker Village of Pleasant Hill |
| B & E Furniture | Family Traditions & Framing | Loper Floral and Gifts | Shell's Sweets |
| Big Papa's Smokehouse | Farmers National Bank | Lori Stocker | Southern Plate Catering & Cafe |
| Bishop's Nursery & Landscaping | First Southern National Bank | Lost River Cave | Stuart Powell Ford |
| Black Watch Alpacas Little Shoppe on the Farm | Floyd's Cycles, Inc. | Lowe's Home Improvement | Studio Glitz |
| Bluegrass Drug Store | Goodie Two Shoes/Barb's | Macy Allen | Sue King |
| Bright Leaf Golf Resort | Heather Wilson | Maker's Mark Distillery | Susie Kendrick |
| Buffalo Trace Distillery | Holiday World | Maple Tree Gallery | Sweets By Cindy |
| Burkman Feeds | Inter-County Energy | Mary McCowan-Hurst | Sweetly Gathered |
| Burkman Nutrition | Intuitive Touch Massage | Meade Tractor of Danville | Tanya Smith Kincaid |
| Candleberry Candle Company | Jeremy & Morgan Janssen | Melinda Lay | The 10th Planet |
| Car Express Wash | Jerry Carter | Melvin Johnson | The Local |
| Casa Grande Mexican Restaurant | Jesters Winery | Morning Pointe of Danville | The Stephen Foster Story |
| Cattleman's Roadhouse | Job Master Rental Inc. | Nicole McCane | Tiffany's Flowers & Gifts |
| Cedarwood Restaurant | Judy Bennett | Norman Lawrence, BBN Homes | Timberland |
| Centre College | Ken Towery's | Norton Center | Tina Brummett |
| Cheddar's Scratch Kitchen | Kentucky Cooperage | Old Bridge Golf Club | Town & Country Animal Clinic |
| Christi Walls, Tupperware | Kentucky Electric Cooperatives | Pam Dennis | Treda Swoveland |
| Cincinnati Reds | Kentucky Railway Museum | PBK Bank | Trena Spalding, Digital Touch Studio |
| Clint Curtis | Kristy Lawrence Realtor | Perfect North Slopes | Weldquip |
| Curtsinger's Sunrise Out-fitters | | Perryville Embroidery | Whitaker Bank |
| Cute as a Button | | Pub 68 | Wilderness Trail Distillery |



One more Christmas carol

Deck the Halls *is more than fa la la*

Before we retire all the Christmas carols of the holiday season now behind us, there is at least one set of lyrics worth a second listen.

Everyone knows the first line, “Deck the halls with boughs of holly,” but it’s a later stanza from this holiday classic that echoes into 2023.

“Fast away, the old year passes, ... Hail the new, ye lads and lasses!” wrote the Scottish musician Thomas Oliphant in 1862.

One hundred sixty-one years later, the years seem to be flying by faster and faster. It really can be hard to keep up. The year ahead will include several milestones, such as the May 6 coronation of King Charles III in the United Kingdom, the November 7 gubernatorial election in Kentucky and on January 7, the Earth’s population is estimated to surpass 8 billion.

At Inter-County Energy, we are always looking ahead to make sure we are doing all we can to protect reliable electric service at the lowest possible price. That means making strategic decisions investing in the necessary equipment, performing maintenance on existing infrastructure and protecting the right-of-way.

Inter-County Energy helps forecast future energy needs because electric service is instantaneous. Any electric you are using right now is being

generated at this precise moment. So, the electric system has to be built large enough to meet the biggest demand at any one time.

The energy supply must be kept in constant balance with demand. To maintain that balancing act, power providers forecast the next day’s energy use and manage energy generation every minute. There are many special interest groups who are far more concerned with how electricity is produced rather than whether it is ready when we need it.

Though we value our heritage at Inter-County Energy, we are always looking ahead, embracing innovations in the best interests of our consumer-members.

Which brings me to another date in 2023. This April marks the 75th anniversary of the first issue of *Kentucky Electric Co-op News*, the monthly publication which would eventually become *Kentucky Living*. We will have a special keepsake issue this August.

Inter-County Energy is proud to bring you this magazine, plus social media, website updates and videos as a commitment to sharing important information about your cooperative.

So as the last Christmas carol of the season fades from your mind, know Inter-County Energy is already looking ahead for you. Happy New Year!

OUR MISSION

The mission of Inter-County Energy Cooperative is to provide long-term valued electrical energy and services to our members through a culture of safety, accountability, innovation, integrity and commitment to community.

PRESIDENT/CEO

Jerry Carter

BOARD OF DIRECTORS

Chairman

Joseph H. Spalding (Marion)

Vice Chairman

Jason E. Todd (Lincoln)

Secretary-Treasurer

J. Kevin Preston (Garrard)

Directors

William H. Peyton (Casey)

W. Allen Goggin (Boyle)

Louis A. Kerrick (Mercer)

Attorney

James Hadden Dean

EDITOR

Morgan Janssen

24-HOUR EMERGENCY/OUTAGE REPORTING (866) 224-2235

For major outage updates and restoration efforts, listen to the following radio stations; WPBK 102.9, WHIR 105.1, WOKH 102.7, WDFB 88.1 or WLSK 100.9.

FOR INFORMATION AND INQUIRIES:

Toll-free: 1-888-266-7322

OFFICE HOURS: 7:30 A.M. - 4:30 P.M.

DANVILLE/BOYLE COUNTY

(859) 236-4561

LEBANON/DISTRICT OFFICE

(270) 692-3761

www.intercountyenergy.net

Email: mail@intercountyenergy.net

This institution is an equal opportunity provider and employer.

Follow us on social media:

