

INTER-COUNTY ENERGY



www.intercountyenergy.net

MAY 2023

Honoring our veterans—thank you for your service

Memorial Day is an American holiday, observed to honor the men and women who died while serving in the U.S. military.

Originally known as Decoration Day, it originated in the years following the Civil War and became an official federal holiday in 1971. Many Americans

consider this as the unofficial start to the summer season by having family gatherings, participating in parades and visiting cemeteries and memorials.

Inter-County Energy will be closed Monday, May 29, in observance of Memorial Day.

Please feel free to use our mobile app or contact our 24-hour outage line in case of an emergency or outage at (866) 224-2235.



CRINA DOBE STOCK

Fun Flag Fact

Over 228,000 American flags are placed at Arlington National Cemetery as Memorial Day approaches. The annual tradition, known as “Flags In,” is conducted by the 3rd U.S. Infantry Regiment and honors the nation’s fallen military heroes.



A Touchstone Energy Cooperative 

May is Electrical Safety Month

May is National Electrical Safety Month and a good time to sweep your home for electrical safety risks. Here are five that many homeowners overlook:

1. Unplug and store all extension cords. They are not designed for prolonged use. If yours are hiding under carpets, they could overheat or get stepped on and damaged, which could start a fire.
2. If you have more than one power strip plugged into an outlet, chances are good that you are overloading your circuits, especially if you live in an older house. If you don't have enough outlets, ask a licensed electrician to add more.
3. Kitchen countertop appliances should be plugged into three-prong, GFCI receptacles. Any electric appliance that you use near water could shock or even electrocute someone.
4. Change the batteries in your smoke alarms twice a year and test them



NRECA

monthly to make sure they're operating properly.

5. Did you know table lamps and overhead light fixtures are designed for

specific lightbulb wattages? Check yours and change any lightbulb with a wattage that exceeds the fixture's capacity.

Getting your power back on

Safety is Inter-County Energy's priority when outage restoration begins. Once safety has been addressed, then we start making plans to get power restored for the greatest number of members as quickly as possible. Inter-County follows a sequence of repairs to restore power to large groups of consumers before tackling smaller groups and individual consumers. The following example details a typical repair sequence that we adhere to during power restoration.

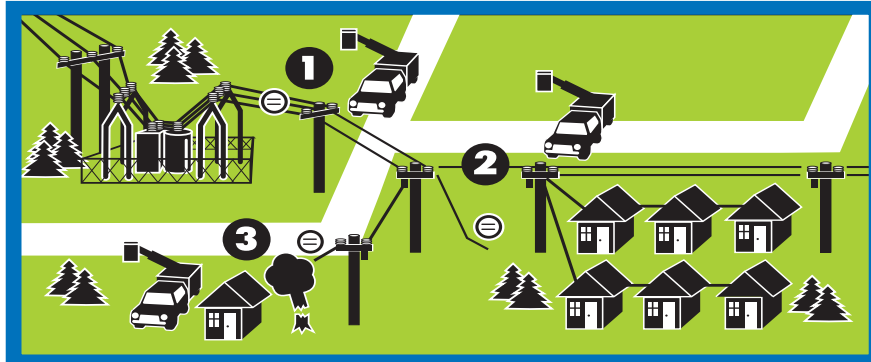
1. The main distribution line from the substation must be fixed before anyone can have power.
2. Next, repair crews fix the lines that bring the power to the greatest number of members in that area.
3. After larger areas of members are back on line, crews fix service lines to individual homes.

During a major outage event like the windstorm in March, as well as any other outage situation, safety is always our number one priority. Be safe and avoid all downed lower lines. Call (866) 224-2235 to report your outage.



APRIL BURGESS

Getting You Back On Line



Inter-County Energy Rate Schedule

Inter-County Energy Rate Schedule Effective October 1, 2021	Customer Charge	Per kWh Charge	Per kW Charge
Residential			
Schedule 1-Farm/Home	\$15.67	\$ 0.09556	
Schedule 1-Prepay Service	\$15.67	\$ 0.09556	
Prepay Service Fee	\$8.20		
Schedule NM-Net Metering	\$15.67	\$ 0.09556	
Schedule 1-A/ETS		\$ 0.06228	
Schedule 2 Non-Residential (0 to 49 kW)			
Small Commercial/Small Power (Excess charge over 10 kW)	\$18.56	\$ 0.08680	\$ 6.03
Schedule 4			
Large Power Rate (LPR) (50 to 499 kW)	\$32.64	\$ 0.06863	\$ 6.03
Schedule 5			
All Electric School Rate	\$32.64	\$ 0.08680	

Outdoor Lighting Service - Security Lights	Per lamp per month
Schedule 6	
107,800 Lumen Directional Floodlight	\$ 39.30*
27,500 Lumen Directional Floodlight	\$ 14.89*
50,000 Lumen Directional Floodlight	\$ 21.10*
27,500 Lumen Cobra Head Light	\$ 13.90*
9,550 Lumen Decorative Colonial Post	\$17.65*
4,000 Lumen Decorative Colonial Post	\$ 13.61*
7,000 Lumen Security Light	\$ 11.19*
9,500 Lumen Security Light	\$ 10.93*
6,000 Lumen Security LED Light	\$ 9.93*
21-28,000 Lumen Security LED Light	\$ 28.36*
Pole charges / Add. Pole required	\$ 5.79*

* Above prices are for installations on existing poles.

FUEL ADJUSTMENT CLAUSE

All rates are applicable to the fuel adjustment clause and may be increased or decreased by an amount per kWh equal to the fuel adjustment amount per kWh as billed by the wholesale power supplier plus an allowance for line losses. The allowance for line losses will not exceed 10 percent and is based on a 12-month moving average of such losses. The fuel clause is subject to all other applicable provisions as set out in 807 KAR 5:056.

Rate Schedule	Customer Charge	Per kWh Charge	Per kW Charge
Industrial Rate			
Schedule B-1 (500 to 4,999 kW)	\$ 623.64	\$ 0.04867	\$ 7.39
Per kW in excess of contract demand			\$ 10.29
Industrial Rate			
Schedule B-2 (5,000 to 9,999 kW)	\$ 1,246.03	\$ 0.04289	\$ 7.39
Per kW in excess of contract demand			\$ 10.29
Industrial Rate			
Schedule B-3 (10,000 kW or higher)	\$ 1,246.03	\$ 0.04172	\$ 7.39
Per kW in excess of contract demand			\$ 10.29
Industrial Rate			
Schedule C-1 (500 to 4,999 kW)	\$ 623.64	\$ 0.04910	\$ 7.39
Industrial Rate			
Schedule C-2 (5,000 to 9,999 kW)	\$ 1,246.03	\$ 0.04328	\$ 7.39
Industrial Rate			
Schedule C-3 (10,000 kW or higher)	\$ 1,246.03	\$ 0.04174	\$ 7.39
Industrial Rate			
Schedule IND G	\$ 5,726.70	\$ 0.04021	\$ 7.30

ENVIROWATTS

Renewable Resource Power Service—100 kWh Block (Minimum size) or Greater \$0.275 per kWh or \$2.75 per 100 kWh Block. This rate is in addition to the regular retail rate of power and requires a one (1) year contract between the customer and the cooperative.

Standard Rider—This Renewable Resource Power Service is a rider to all currently applicable rate schedules. The purpose of this rider is to provide the consumer with a renewable source of energy that may be considered more environmentally friendly.

ENVIRONMENTAL COST RECOVERY SURCHARGE

The Environmental Cost Recovery Surcharge will be applicable to all electric rate schedules offered by Inter-County Energy. The monthly billing amount under each of the schedules, to which this mechanism is applicable including the fuel clause, shall be increased or decreased by the amount of the environmental surcharge billed by East Kentucky Power Cooperative to the distribution cooperative. The pass through mechanism used by East Kentucky Power Cooperative shall be the base/current approach.

*Happy Mother's Day
from Inter-County Energy*



JCHZHEADORE STOCK



Flagpole safety

Memorial Day, the last Monday in May, honors those who have died in American wars.

To mark this day, many people fly the American flag.

Show your patriotism this season by treating the American flag with respect and by observing a few simple guidelines for flagpole safety.

FLAG GUIDELINES

The United States Flag Code is a federal law that establishes advisory rules for display and care of the national flag. Here are a few of the guidelines it lays out.

The flag is usually flown between sunrise and sunset. It's a sign of respect to bring it inside at night. However, the flag can be flown overnight, as long as it's illuminated during the hours of darkness.

The flag should never be used for advertising or used as a costume or athletic uniform. A flag patch, however, is appropriate for military, fire, police and patriotic organization uniforms. When a lapel flag pin is worn, it should be "on the left lapel near the heart."

When a flag has become too worn to display, it should be disposed of "in a dignified way, preferably by burning." For additional guidelines, visit usc.house.gov and search "U.S. Flag Code."

FLAGPOLE SAFETY

Being patriotic is important, but so is being safe when working with flagpoles. Whether you are installing a fiberglass or a metal flagpole, follow these tips to be safe:

1. Call 811 before digging to install a flagpole.
2. Be overly cautious when working around power lines. Maintain at least a 20-foot clearance around power lines and any nearby trees. Consider



BIRGITKORBER/ADOBESTOCK

both the flagpole length and the flag size for the 20-foot clearance.

3. If a pole comes in contact with a power line, serious injury or death can occur to anyone holding the pole or standing nearby.
4. Any object touching an overhead power line could serve as a conduit for the electricity should it reach the ground, including humans.
5. A typical residential flagpole, which is installed in the ground, is 20-25 feet tall. When using a 20-foot pole with a recommended maximum flag size of 3x5 feet, the pole should be no closer than 45 feet to any overhead power lines. If you are using a 25-foot pole with a recommended maximum flag size of 4x6 feet, the pole should be no closer than 51 feet from any existing overhead power lines.
6. Check local regulations and building codes before installing a flagpole.

"We fly the American flag, not for the flag itself, but for the country it stands for," said Jerry Carter, President/CEO at Inter-County Energy. "Most importantly, we raise our flags for the many Americans who fought and died to protect the freedom of the United States of America."

OUR MISSION

Inter-County Energy accomplishes our daily mission by providing energy and services to our members through a culture of Safety, Accountability, Integrity, Innovation and Commitment to Community.

PRESIDENT/CEO

Jerry Carter

BOARD OF DIRECTORS

Chairman

Joseph H. Spalding (Marion)

Vice Chairman

Jason E. Todd (Lincoln)

Secretary-Treasurer

J. Kevin Preston (Garrard)

Directors

William H. Peyton (Casey)

W. Allen Goggin (Boyle)

Louis A. Kerrick (Mercer)

Attorney

James Hadden Dean

EDITOR

Morgan Janssen

24-HOUR EMERGENCY/OUTAGE REPORTING (866) 224-2235

For major outage updates and restoration efforts, listen to the following radio stations; WPBK 102.9, WHIR 105.1, WOKH 102.7, WDFB 88.1 or WLSK 100.9.

FOR INFORMATION AND INQUIRIES:

Toll-free: 1-888-266-7322

OFFICE HOURS: 7:30 A.M. - 4:30 P.M.

DANVILLE/BOYLE COUNTY
(859) 236-4561

LEBANON/DISTRICT OFFICE
(270) 692-3761

www.intercountyenergy.net

Email: mail@intercountyenergy.net

This institution is an equal opportunity provider and employer.

Follow us on social media:

